

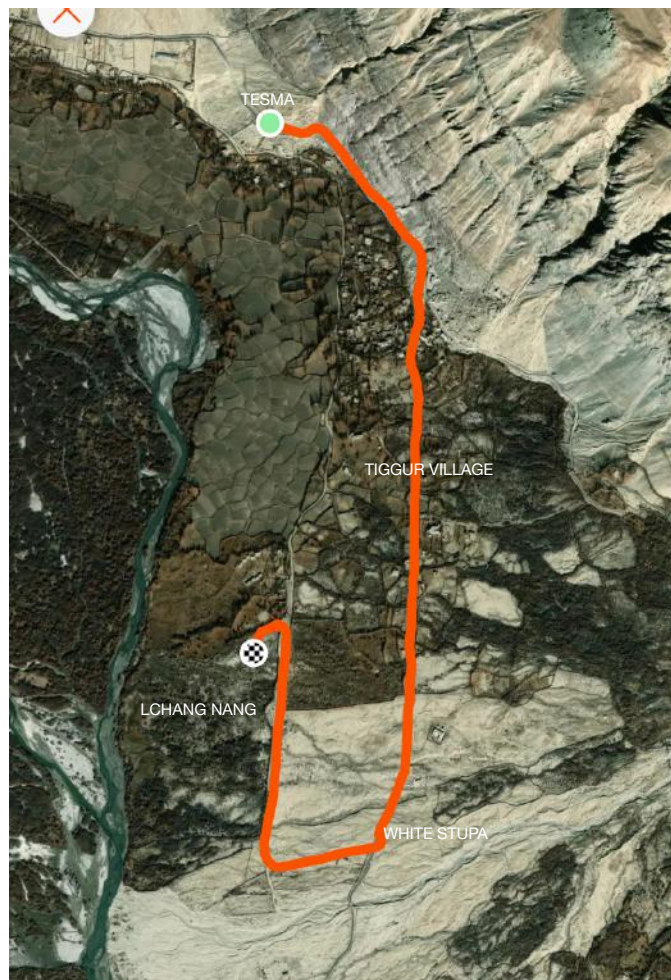


LCHANG NANG

MOUNTAIN BIKING

(Cycling on the Old Silk Route)

RIDE TO THE PANORAMA VIEW(TESMA)



BRIEF

“Ride on a mountain bike instead of a poor camel on the old silk route”, an anonymous responsible rider.

Direction: Cross the 300 year old stone Maney to hit the junction on the main road and turn left. Cross Maney Khang , ride straight for another 1km from there and you will reach Tesma (panoramic view). Enjoy the view and of course the ride.

Difficulty Level : MEDIUM - 7 KM (Two way)

Facts : You will be riding on the silk route dating back to the second century B.C. There is also Maney Khang(Buddhist temple) in the middle of the village surrounded by small shops and houses. You will also see some village life enroute . Sunset and sunrise is amazing at this location.

RS 1500/PERSON (INCLUDES A BAG OF GOODIES TO KEEP YOU ENERGISED)