

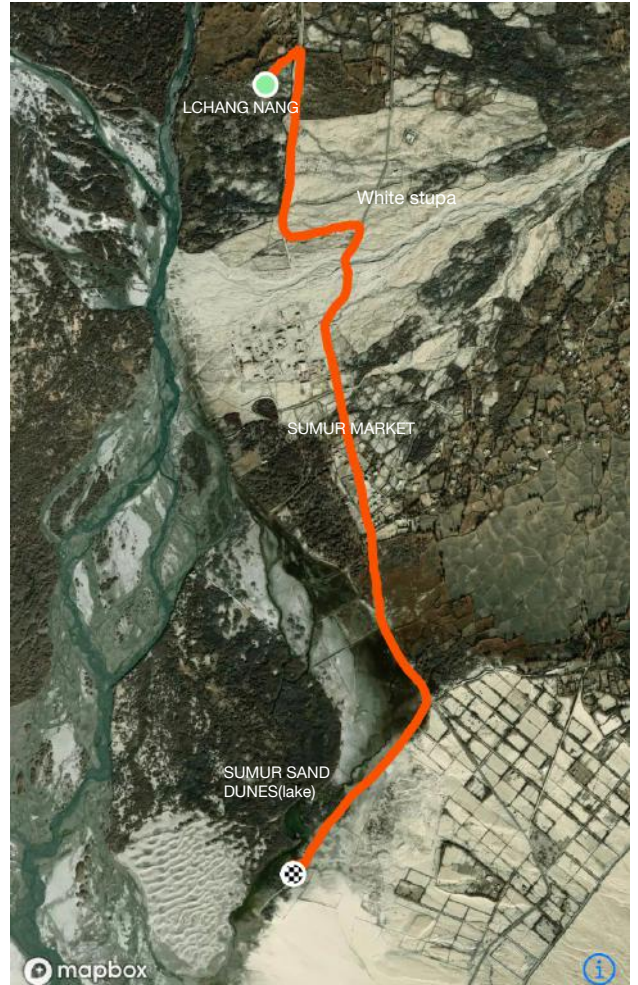


LCHANG NANG

MOUNTAIN BIKING

(Cycling on the Old Silk Route)

RIDE TO SUMUR SAND DUNES (LAKE)



BRIEF

“Ride on a mountain bike instead of a poor camel on the old silk route”, an anonymous responsible rider.

Direction : Cross the 300 year old stone maney to hit the junction on the main road and turn right. After 3 Kms and crossing Sumur market, turn right from the board pointing towards Sumur sand dunes. Enjoy the view and of course the ride .

Difficulty Level : EASY - 7 KM (Two way)

Facts : You will be riding on the old silk route feeling nostalgic about the past. While at Sumur sand dunes look for migratory birds , meditate and absorb the beauty around. Sunset and sunrise is amazing on the dunes.

RS 1500/PERSON (INCLUDES A BAG OF GOODIES TO KEEP YOU ENERGISED)